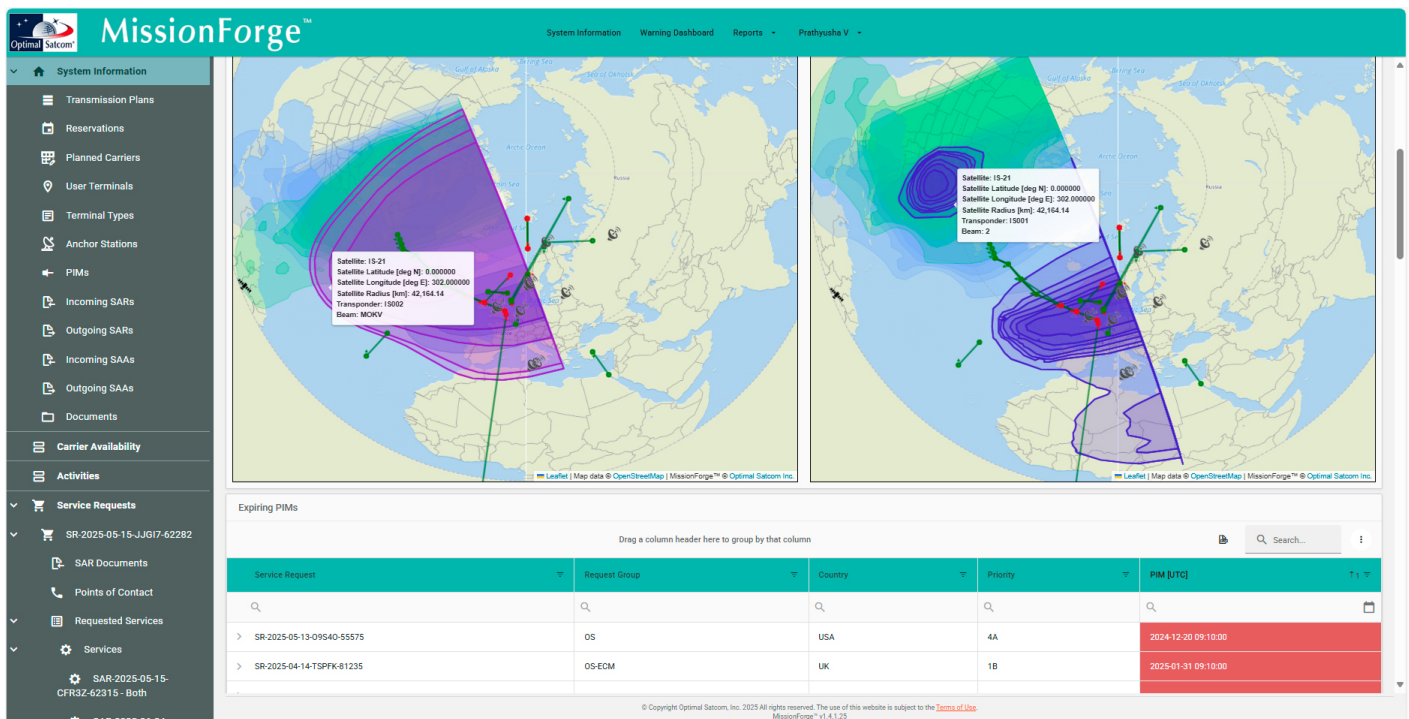




MissionForge™

Streamlining secure SATCOM service planning and workflows delivery



www.optimalsatcom.com

MissionForge™



OVERVIEW

MissionForge™ supports the entire lifecycle of SATCOM services, including service requests, transmission plans, and customer communications for both commercial and military operators.

MissionForge is able to be customized and tailored to specific mission management workflows, including pre-analysis studies, service request management, transmission plan evaluation, capacity allocation, and third-party coordination.

MissionForge enhances productivity by automating the parsing of industry-standard documents and generating service approval documents in standardized formats using configurable templates.

MissionForge integrates seamlessly with Optimal Satcom's Enterprise Capacity Manager® (ECM) product for exchanging transmission plan and link budget information and detailed service analyses.

INTRODUCTION

MissionForge is a robust enterprise-level platform developed by Optimal Satcom to support the full lifecycle of satellite communications (SATCOM) services. It enables commercial and government operators to manage service requests, transmission plans, capacity allocations, and customer communications through a streamlined and configurable workflow.

Designed for flexibility and integration, MissionForge offers productivity-enhancing tools, customizable interfaces, and seamless coordination with Optimal Satcom's Enterprise Capacity Manager® (ECM) system. Built to operate in secure environments, MissionForge supports classified operations and cross-domain workflows.

With MissionForge, organizations can efficiently coordinate mission requirements, improve operational transparency, and reduce turnaround times in planning and delivering satellite services.

WHO USES MISSIONFORGE

MissionForge is designed to meet the mission-critical needs of a wide range of SATCOM stakeholders. From commercial satellite operators to government and military organizations, MissionForge provides the tools and flexibility required to manage complex satellite communications services with efficiency. Its adaptable workflows and secure architecture make it the platform of choice for those operating in both unclassified and classified environments.

MISSIONFORGE FOR SATELLITE OPERATORS

Commercial satellite operators rely on MissionForge to coordinate and manage end-to-end SATCOM service delivery. The platform streamlines workflows for service request intake, capacity planning, and customer coordination. By automating document handling and enabling integration with ECM, MissionForge helps operators reduce turnaround time, improve resource utilization, and ensure reliable service execution across a wide range of mission scenarios.

MISSIONFORGE FOR SATELLITE SERVICE PROVIDERS

MissionForge empowers satellite service providers with the tools to efficiently plan, manage, and deliver satellite-based communication services. It supports the configuration of complex service parameters, tracks service tasks, and facilitates coordination with third-party capacity providers. The result is enhanced operational transparency, greater responsiveness to customer demands, and improved service quality—without sacrificing scalability or compliance.

MISSIONFORGE FOR GOVERNMENT AND MILITARY PROGRAMS

For government and defense missions, MissionForge offers secure, adaptable workflows capable of supporting operations in classi-

fied environments. It accommodates cross-domain operations, for operating across classification boundaries, and supports secure user access controls. MissionForge also supports parsing and generation of process documents such as Satellite Access Requests (SARs) and Satellite Access Authorizations (SAAs) (including US Government document formats). It also enables mission planners to handle multiple security classifications, perform contingency planning (PACE), and coordinate satellite resources with efficiency.

MISSIONFORGE FOR VALUE-ADDED RESELLERS (VARs)

Value-Added Resellers benefit from MissionForge's ability to manage leased and shared satellite capacity. The platform provides detailed oversight of service requests, carrier lineups, and customer communications, allowing VARs to enhance their service portfolio. With automated reporting, customizable templates, and lifecycle management tools, MissionForge helps VARs meet service delivery expectations while maintaining full control over service execution.

CORE CAPABILITIES OF MISSIONFORGE

MissionForge equips users with a comprehensive set of tools to efficiently plan, manage, and execute satellite communications services. Designed to support complex workflows across both commercial and government environments, MissionForge enables secure service request handling, resource allocation, automated document generation, and detailed reporting—all within a flexible and integrated platform.

SERVICE REQUEST MANAGEMENT

MissionForge enables users to create, view, and update service requests with control. Each request can be classified and configured to reflect specific operational parameters, ensuring that the mission needs are accurately captured from the outset. The platform supports end-to-end service lifecycle management, improving consistency and reducing manual overhead.

DOCUMENT HANDLING AND AUTOMATION

To support compliance and efficiency, MissionForge automates key document workflows. Users can import Satellite Access Requests (SARs) in U.S. Government Word format, with intelligent field parsing to reduce manual entry. The system also supports the generation of Satellite Access Authorizations (SAAs) and other essential outputs using customizable templates tailored to organizational standards.

RESOURCE CONFIGURATION

MissionForge allows planners to define and manage mission-specific components such as Points of Contact (POCs), services, terminals, and anchor earth stations. This level of configurability ensures

that each mission reflects the technical and operational realities of the network, improving coordination across internal teams and external partners.

CAPACITY ALLOCATION AND PLANNING

The platform provides robust tools for allocating satellite capacity, reserving resources, and managing the full lifecycle of carrier and transmission plans. MissionForge supports PACE (Primary, Alternate, Contingency, Emergency) planning, enabling users to prepare for unexpected challenges by designating alternate resources in advance.

TASK MANAGEMENT AND COMMUNICATION

MissionForge includes integrated task tracking and communication management features. Service-related activities can be monitored and assigned in-platform, while customer responses can be assembled and distributed efficiently. Automated email tracking and centralized communication logs provide complete visibility into all mission-related correspondence.

INTEGRATION WITH ENTERPRISE CAPACITY MANAGER (ECM)

Seamless integration with Optimal Satcom’s ECM system allows users to exchange technical data on user services and terminals, perform feasibility analyses, and import detailed transmission plan and link budget information directly into MissionForge. This connectivity enhances the accuracy of service analyses and enables advanced modeling and optimization of satellite resources.

COMPREHENSIVE REPORTING AND MONITORING

Users can generate a wide variety of technical and management reports in Excel format tailored to organizational needs. Real-time monitoring tools offer visibility into mission progress, resource allocation, and service status, allowing stakeholders to make informed decisions quickly and confidently.

USER ACCESS AND PERMISSION CONTROL

MissionForge includes granular access controls to ensure secure and appropriate system use. Administrators can configure roles and permissions to align with organizational structure, security

classifications, and user responsibilities—supporting operations in both unclassified and classified environments. MissionForge now supports identity integration with external authentication providers including KeyCloak and Active Directory, enabling more flexible credential policies and secure federation.

PROCESS AND DOCUMENT STORAGE

All mission-related documents and planning artifacts can be securely stored and managed within MissionForge. The platform ensures that essential records are organized, accessible, and version-controlled, reinforcing transparency, compliance, and operational readiness across the mission lifecycle.

SERVICE ORDER GENERATION

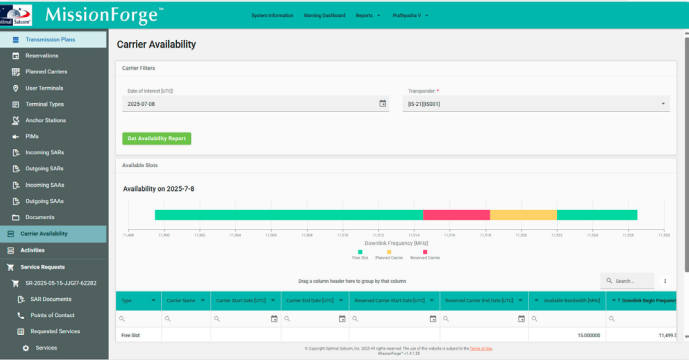
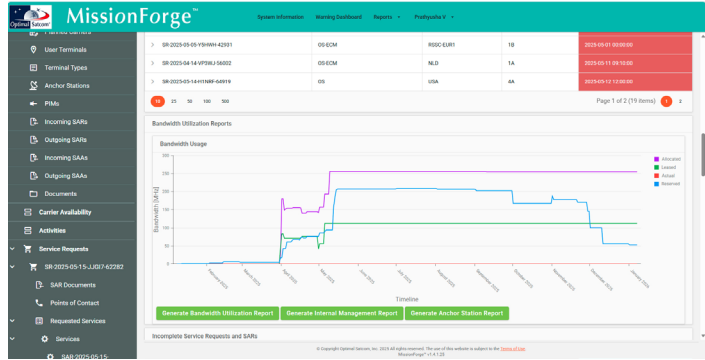
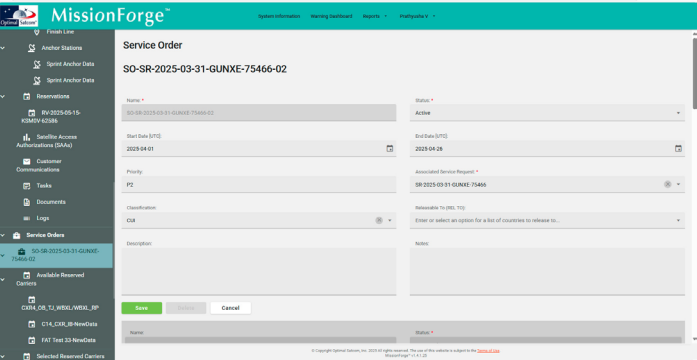
MissionForge supports the creation of Service Orders tied directly to approved service requests and reserved carrier resources. This ensures traceability and operational alignment between planning and execution phases, providing a clear audit trail and reducing manual coordination between teams.

CARRIER LINEUP AND TEARDOWN MANAGEMENT

Operators can manage carrier lineups and tear-downs within MissionForge, tracking the full lifecycle of assigned resources. By centralizing these operations, the platform improves visibility into carrier utilization and streamlines transitions between mission phases or service periods.

HIGHLY CUSTOMIZABLE AND FLEXIBLE ARCHITECTURE

MissionForge is built on a modular and flexible architecture designed to adapt to the diverse and evolving needs of satellite communications operations. The platform is highly customizable, allowing organizations to tailor workflows and interfaces to match their specific mission management requirements. Its architecture supports operations across various satellite constellations—including hybrid configurations involving GEO, MEO, and LEO systems—making it suitable for both commercial and government users.

A screenshot of the MissionForge 'Reports' interface, specifically the 'Service Requests' section. It displays a table with columns for 'Request ID', 'Request Name', 'Request Status', 'Request Type', 'Request Priority', 'Request Date', 'Request Location', 'Request Category', 'Request Sub-category', 'Request Description', 'Request Assigned To', 'Request Assigned Date', 'Request Assigned Time', 'Request Assigned Location', 'Request Assigned Category', 'Request Assigned Sub-category', 'Request Assigned Description', 'Request Assigned Assigned To', 'Request Assigned Assigned Date', 'Request Assigned Assigned Time', 'Request Assigned Assigned Location', 'Request Assigned Assigned Category', and 'Request Assigned Assigned Sub-category'. The table contains several rows of data. The interface includes the same navigation menu.

SAMPLE MISSIONFORGE SCREENS

OPERATIONAL IMPACT OF MISSIONFORCE

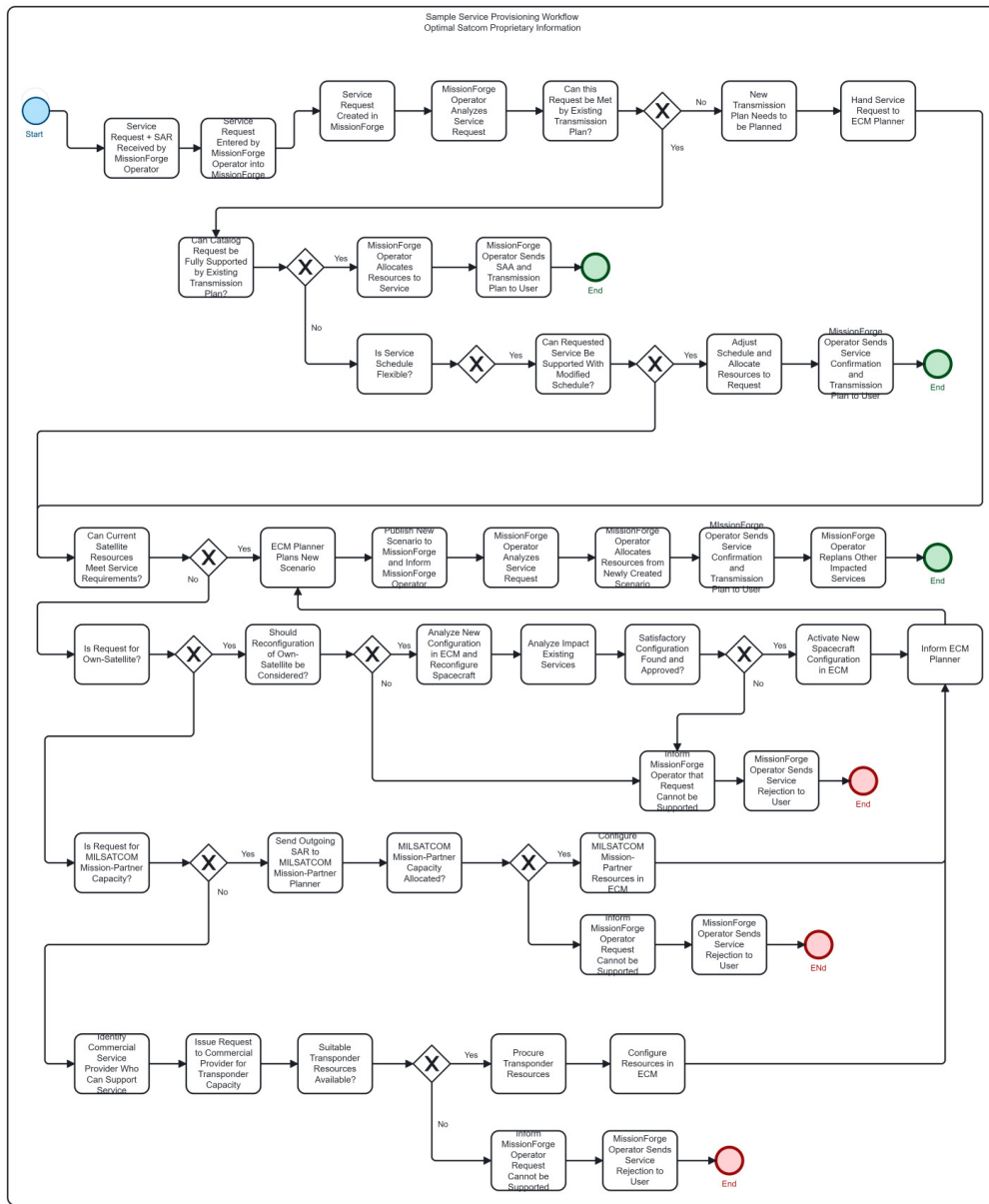
MissionForce significantly enhances the planning, coordination, and delivery of satellite communication services across commercial and government operations. Its robust, integrated workflow streamlines the end-to-end mission lifecycle—improving responsiveness, operational clarity, and mission assurance.

From the outset, MissionForce accelerates service request intake through automated document parsing, reducing manual effort and improving data accuracy. Planners can quickly create, classify, configure requests, assign contacts, and set mission parameters. Built-in tools allow for the seamless generation of Satellite Access Requests (SARs) and Satellite Access Authorizations (SAAs), all formatted to organizational standards using customizable templates.

As mission planning progresses, MissionForce provides real-time tools to reserve resources, allocate carriers, and conduct PACE (Primary, Alternate, Contingency, Emergency) planning. These features ensure operational flexibility while maintaining service continuity, even under unexpected changes or network constraints.

Task tracking and customer communication are streamlined through centralized dashboards, while integrated reporting ensures stakeholders have access to current operational data. MissionForce's interoperability with Optimal Satcom's Enterprise Capacity Manager (ECM) further amplifies its operational value—enabling detailed service analyses and ensuring coordination with broader capacity management efforts.

By delivering an agile, secure, and structured planning environment, MissionForce enables organizations to reduce turnaround times, minimize risk, and deliver reliable SATCOM services at scale.



SAMPLE CUSTOMIZED SERVICE PROVISIONING MISSIONFORCE WORKFLOW

Optimal Satcom, Inc.

600 Herndon Parkway
Suite 100
Herndon, VA 20170
USA

Ph: +1 703 657 8800
US Toll Free: 1 888 430 4050
Fax: +1 703 547 0145
Email: products@optimalsatcom.com
www.optimalsatcom.com

Optimal Satcom is the leading global provider of enterprise systems and services for satellite capacity management.

For setup support, configuration, and KeyCloak realm provisioning, contact our integration team:

Visit us on the web at www.optimalsatcom.com for more information on our

- Enterprise Satellite Capacity Management Systems
- SATCOM Software Tools
- Co-Branded Mobile Apps
- SATCOM Training Courses
- Management and Technical Consulting Services



© Copyright 2002 – 2025, Optimal Satcom, Inc. All rights reserved.

Optimal Satcom®, Complian®, and Enterprise Capacity Manager® are registered trademarks of Optimal Satcom, Inc. The Optimal Satcom logo, ECM, Antenna Coverage Program, ACP, Sun Outage Calculator, and SunOut are trademarks of Optimal Satcom, Inc.

COMSAT® is a trademark owned by COMSAT Corporation. All other trademarks and registered trademarks are the property of their respective owners.